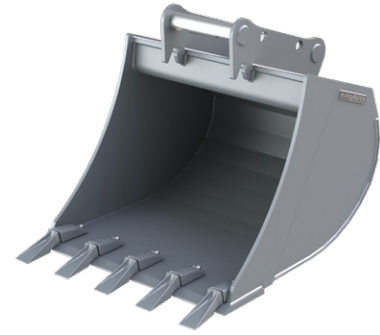


General Bucket for all kinds of excavation works in light and medium-heavy soils as well as for loading or backfilling of sand, gravel and earth. The integrated quick change adapter is adjusted to the system L-Lock and can be mounted both directions.

Can be used as backhoe bucket or face shovel (except GB01L).

Other adapters on request.

- ▷ **Double conical design.**
- ▷ Long bucket base for **easy penetration and high excavating capacity.**
- ▷ **Durable** thanks to robust design and use of highly resistant wearout steel. Cutting edges 500HB, bucket base 400HB.
- ▷ Protruding bucket base for **better grading behavior and protection from wearout.**
- ▷ GB01L - GB03L: bolt-on teeth / GB04L - GB12L: welded shell teeth.



GB08L SYM

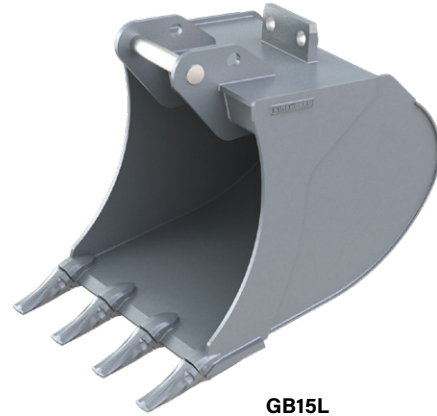
General Bucket GB-L

Type	Number of teeth	Volume ISO 7451 (m³/yd³)	Width (mm/in)	Weight (kg/lbs)	Adapter	Operating weight (t/lbs)
GB01L-024	2	0.013 / 0.017	240 / 9.4	21 / 46.2	KSW01	0.5-1 / 1,100-2,200
GB01L-030	3	0.015 / 0.019	300 / 11.8	24 / 52.8	KSW01	0.5-1 / 1,100-2,200
GB01L-040	3	0.020 / 0.026	400 / 15.7	27 / 59.4	KSW01	0.5-1 / 1,100-2,200
GB01L-050	4	0.024 / 0.031	500 / 19.6	30 / 66	KSW01	0.5-1 / 1,100-2,200
GB02L-022 SYM	2	0.023 / 0.030	220 / 8.6	29 / 63.8	KSW01 SYM	1.0-1.8 / 2,200-3,960
GB02L-025 SYM	3	0.026 / 0.034	250 / 9.8	31 / 68.2	KSW01 SYM	1.0-1.8 / 2,200-3,960
GB02L-030 SYM	3	0.030 / 0.039	300 / 11.8	37 / 81.4	KSW01 SYM	1.0-1.8 / 2,200-3,960
GB02L-040 SYM	3	0.040 / 0.052	400 / 15.7	41 / 90.2	KSW01 SYM	1.0-1.8 / 2,200-3,960
GB02L-050 SYM	4	0.050 / 0.065	500 / 19.6	49 / 107.8	KSW01 SYM	1.0-1.8 / 2,200-3,960
GB02L-060 SYM	4	0.060 / 0.078	600 / 23.6	53 / 116.6	KSW01 SYM	1.0-1.8 / 2,200-3,960
GB03L-030 SYM	3	0.040 / 0.052	300 / 11.8	47 / 103.4	KSW03 SYM	1.8-2.6 / 3,960-5,720
GB03L-040 SYM	3	0.060 / 0.078	400 / 15.7	56 / 123.2	KSW03 SYM	1.8-2.6 / 3,960-5,720
GB03L-050 SYM	4	0.080 / 0.104	500 / 19.6	62 / 136.4	KSW03 SYM	1.8-2.6 / 3,960-5,720
GB03L-060 SYM	4	0.097 / 0.126	600 / 23.6	72 / 158.4	KSW03 SYM	1.8-2.6 / 3,960-5,720
GB04L-030 SYM	3	0.056 / 0.073	300 / 11.8	63 / 138.6	KSW03 SYM	2.6-3.5 / 5,720-7,700
GB04L-040 SYM	3	0.075 / 0.098	400 / 15.7	71 / 156.2	KSW03 SYM	2.6-3.5 / 5,720-7,700
GB04L-050 SYM	4	0.100 / 0.130	500 / 19.6	84 / 184.8	KSW03 SYM	2.6-3.5 / 5,720-7,700
GB04L-060 SYM	4	0.127 / 0.166	600 / 23.6	93 / 204.6	KSW03 SYM	2.6-3.5 / 5,720-7,700
GB04L-070 SYM	5	0.153 / 0.200	700 / 27.5	105 / 231	KSW03 SYM	2.6-3.5 / 5,720-7,700
GB04L-080 SYM	5	0.180 / 0.235	800 / 31.4	121 / 266.2	KSW03 SYM	2.6-3.5 / 5,720-7,700
GB05L-030 SYM	3	0.066 / 0.086	300 / 11.8	72 / 158.4	KSW03 SYM	3.5-5.0 / 7,700-11,000
GB05L-040 SYM	3	0.096 / 0.125	400 / 15.7	79 / 173.8	KSW03 SYM	3.5-5.0 / 7,700-11,000
GB05L-050 SYM	4	0.130 / 0.170	500 / 19.6	91 / 200.2	KSW03 SYM	3.5-5.0 / 7,700-11,000
GB05L-060 SYM	4	0.162 / 0.211	600 / 23.6	101 / 222.2	KSW03 SYM	3.5-5.0 / 7,700-11,000
GB05L-070 SYM	5	0.195 / 0.255	700 / 27.5	111 / 244.2	KSW03 SYM	3.5-5.0 / 7,700-11,000
GB05L-080 SYM	5	0.230 / 0.300	800 / 31.4	126 / 277.2	KSW03 SYM	3.5-5.0 / 7,700-11,000
GB06L-030 SYM	3	0.080 / 0.104	300 / 11.8	77 / 169.4	KSW03 SYM	4.5-6.0 / 9,900-13,200
GB06L-040 SYM	3	0.120 / 0.156	400 / 15.7	88 / 193.6	KSW03 SYM	4.5-6.0 / 9,900-13,200
GB06L-050 SYM	4	0.140 / 0.183	500 / 19.6	98 / 215.6	KSW03 SYM	4.5-6.0 / 9,900-13,200
GB06L-060 SYM	4	0.180 / 0.235	600 / 23.6	108 / 237.6	KSW03 SYM	4.5-6.0 / 9,900-13,200
GB06L-080 SYM	5	0.250 / 0.327	800 / 31.4	129 / 283.8	KSW03 SYM	4.5-6.0 / 9,900-13,200
GB06L-100 SYM	5	0.320 / 0.418	1,000 / 39.3	149 / 327.8	KSW03 SYM	4.5-6.0 / 9,900-13,200
GB08L-040 SYM	3	0.130 / 0.170	400 / 15.7	142 / 312.4	KSW08 SYM	5.5-8.5 / 12,100-18,700
GB08L-050 SYM	4	0.170 / 0.222	500 / 19.6	158 / 347.6	KSW08 SYM	5.5-8.5 / 12,100-18,700
GB08L-060 SYM	4	0.210 / 0.274	600 / 23.6	173 / 380.6	KSW08 SYM	5.5-8.5 / 12,100-18,700
GB08L-080 SYM	5	0.300 / 0.392	800 / 31.4	213 / 468.6	KSW08 SYM	5.5-8.5 / 12,100-18,700
GB08L-090 SYM	5	0.340 / 0.444	900 / 35.4	246 / 541.2	KSW08 SYM	5.5-8.5 / 12,100-18,700
GB08L-100 SYM	5	0.380 / 0.497	1,000 / 39.3	268 / 589.6	KSW08 SYM	5.5-8.5 / 12,100-18,700
GB10L-040 SYM	3	0.155 / 0.202	400 / 15.7	158 / 347.6	KSW08 SYM	8.0-10.0 / 17,600-22,000
GB10L-050 SYM	4	0.200 / 0.261	500 / 19.6	177 / 389.4	KSW08 SYM	8.0-10.0 / 17,600-22,000
GB10L-060 SYM	4	0.255 / 0.333	600 / 23.6	199 / 437.8	KSW08 SYM	8.0-10.0 / 17,600-22,000
GB10L-080 SYM	5	0.360 / 0.470	800 / 31.4	224 / 492.8	KSW08 SYM	8.0-10.0 / 17,600-22,000
GB10L-090 SYM	5	0.410 / 0.536	900 / 35.4	254 / 558.8	KSW08 SYM	8.0-10.0 / 17,600-22,000
GB10L-100 SYM	5	0.460 / 0.601	1,000 / 39.3	269 / 591.8	KSW08 SYM	8.0-10.0 / 17,600-22,000
GB12L-040 SYM	3	0.170 / 0.222	400 / 15.7	177 / 389.4	KSW08 SYM	8.0-10.0 / 17,600-22,000
GB12L-050 SYM	4	0.225 / 0.294	500 / 19.6	186 / 409.2	KSW08 SYM	10.0-12.0 / 22,000-26,400
GB12L-060 SYM	4	0.280 / 0.366	600 / 23.6	222 / 488.4	KSW08 SYM	10.0-12.0 / 22,000-26,400
GB12L-080 SYM	5	0.395 / 0.516	800 / 31.4	249 / 547.8	KSW08 SYM	10.0-12.0 / 22,000-26,400
GB12L-090 SYM	5	0.450 / 0.588	900 / 35.4	269 / 591.8	KSW08 SYM	10.0-12.0 / 22,000-26,400
GB12L-100 SYM	5	0.510 / 0.667	1,000 / 39.3	282 / 620.4	KSW08 SYM	10.0-12.0 / 22,000-26,400

Package consists of: general bucket incl. teeth, adapter frame for L-Lock

General Bucket for all kinds of excavation works in light and medium-heavy soils as well as for loading or backfilling of sand, gravel and earth. The integrated quick change adapter is adjusted to the system L-Lock. Other adapters on request.

- ▷ **Conical design** with narrowing by 2° on both sides.
- ▷ **Easy penetration and high excavating capacity.**
- ▷ **Durable** thanks to robust design and use of highly resistant wearout steel for the bucket base and side edges (400HB).
- ▷ Protruding bucket base for **better grading behavior** and **protection from wearout.**
- ▷ **Optimized kives and excavator teeth.**



GB15L

General Buckets

Type	Number of teeth	Volume ISO 7451 (m ³ /yd ³)	Width (mm/in)	Weight (kg/lbs)	Adapter	Operating weight (t/lbs)
GB15L-040	2	0.19 / 0.25	400 / 15.8	262 / 576	KSW10	10 - 15 / 22,000 - 33,000
GB15L-050	3	0.26 / 0.34	500 / 19.7	284 / 625	KSW10	10 - 15 / 22,000 - 33,000
GB15L-060	3	0.34 / 0.44	600 / 23.6	305 / 671	KSW10	10 - 15 / 22,000 - 33,000
GB15L-080	4	0.49 / 0.64	800 / 31.5	367 / 807	KSW10	10 - 15 / 22,000 - 33,000
GB15L-100	4	0.65 / 0.85	1,000 / 39.4	417 / 917	KSW10	10 - 15 / 22,000 - 33,000
GB15L-120	5	0.81 / 1.06	1,200 / 47.2	479 / 1,054	KSW10	10 - 15 / 22,000 - 33,000
GB19L-040	2	0.23 / 0.3	400 / 15.8	320 / 704	KSW10	15 - 19 / 33,000 - 41,800
GB19L-050	3	0.31 / 0.41	500 / 19.7	349 / 768	KSW10	15 - 19 / 33,000 - 41,800
GB19L-060	3	0.39 / 0.51	600 / 23.6	374 / 823	KSW10	15 - 19 / 33,000 - 41,800
GB19L-080	4	0.57 / 0.75	800 / 31.5	447 / 983	KSW10	15 - 19 / 33,000 - 41,800
GB19L-100	4	0.76 / 0.99	1,000 / 39.4	509 / 1,120	KSW10	15 - 19 / 33,000 - 41,800
GB19L-120	5	0.95 / 1.24	1,200 / 47.2	584 / 1,285	KSW10	15 - 19 / 33,000 - 41,800
GB23L-060	3	0.44 / 0.58	600 / 23.6	474 / 1,043	KSW21/25	19 - 23 / 41,800 - 50,600
GB23L-080	4	0.64 / 0.84	800 / 31.5	541 / 1,190	KSW21/25	19 - 23 / 41,800 - 50,600
GB23L-100	4	0.85 / 1.11	1,000 / 39.4	614 / 1,351	KSW21/25	19 - 23 / 41,800 - 50,600
GB23L-120	5	1.06 / 1.39	1,200 / 47.2	701 / 1,542	KSW21/25	19 - 23 / 41,800 - 50,600
GB23L-140	5	1.27 / 1.66	1,400 / 55.1	774 / 1,703	KSW21/25	19 - 23 / 41,800 - 50,600
GB28L-060	3	0.49 / 0.64	600 / 23.6	592 / 1,302	KSW21/25	23 - 28 / 50,600 - 61,600
GB28L-080	4	0.71 / 0.93	800 / 31.5	697 / 1,533	KSW21/25	23 - 28 / 50,600 - 61,600
GB28L-120	5	1.18 / 1.54	1,200 / 47.2	878 / 1,932	KSW21/25	23 - 28 / 50,600 - 61,600
GB28L-140	5	1.42 / 1.86	1,400 / 55.1	972 / 2,138	KSW21/25	23 - 28 / 50,600 - 61,600
GB35L-080	3	0.86 / 1.12	800 / 31.5	949 / 2,088	KSW21/25	26 - 35 / 57,200 - 77,000
GB35L-140	4	1.73 / 2.26	1,400 / 55.1	1,338 / 3,054	KSW21/25	26 - 35 / 57,200 - 77,000
GB35L-160	5	1.73 / 2.26	1,600 / 63.0	1,494 / 3,287	KSW21/25	26 - 35 / 57,200 - 77,000

Package consists of: general bucket incl. teeth, KSW-adapter for L-Lock